

# Hygiene Management in the Packaging Hall

Hygiene management plays a major role in the production and packaging of high quality beer and beverages. The risk that your brand image would suffer because of quality losses is to be definitely avoided.

Therefore SOPURA has developed a wide range of efficient hygiene solutions specially designed for the Packaging Hall.

## DETERGENCY

The main purpose of a bottlewasher is to clean and disinfect bottles. There are three types of soil to be removed: physical, chemical and biological. The principle agent used for cleaning and disinfection is **caustic soda**. Depending on the application and the equipment to be cleaned, SOPURA proposes additives to caustic soda solutions that strengthen the detergent power whilst presenting excellent foam inhibiting properties under cold or hot usage :

### Additives to Caustic Soda Solutions:

**MIX** *MIX is a range of products for classic to specific applications like cleaning of fruit juice bottles, aluminium foiled bottles, special labels and difficult to remove glues.*

**MFF** *The MFF range of agents presents outstanding antifoaming properties, excellent biodegradability in accordance with the law, as well as perfect rinseability.*

### Water Treatment (Rinse Area)

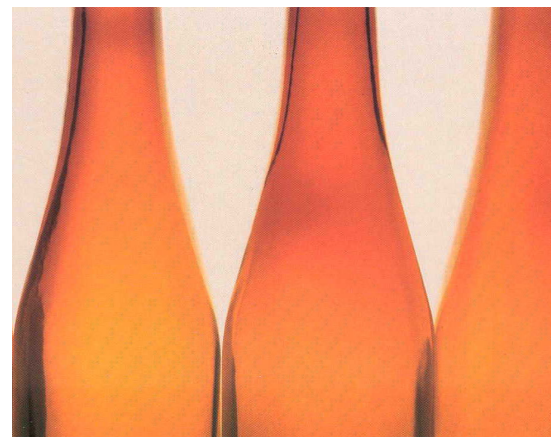
During the rinsing process, which aims to eliminate all traces of components used in the cleaning baths and to reduce the temperature, two main risks are to be avoided : recontamination of bottles and scale formation.

To efficiently eliminate the **risk of recontamination of bottles** in the rinsing section, due to micro-organisms present in the water, SOPURA has developed a wide range of efficient products :

- CHLOROSEPT** *Very efficient chlorine based sanitizing solution*
- SOPUROXID** *Very efficient peracetic acid based sanitizing solution*
- SOPURDIOX** *Very efficient chlorine-dioxide based sanitizing solution*
- MICROSEPT 2B** *High biocide efficiency*

The **scaling problem** in the rinse areas is mainly due to precipitation / incrustation of calcium carbonates and magnesium hydroxide. Anti-scaling agents are therefore used in order to prevent / reduce scale build-up in the machine.

- WPS / WPN** *Blends of organic acids for prevention of scale*
- DETALIT** *pH regulator based on sulphuric and phosphonic acids (prevention of scale)*
- DETAL HP** *Descaling agent*
- DEPEX BW** *Descaling agent*



## SCUFFING MANAGEMENT

Scuffing has a double origin: chemical attack (hydrolysis) in the bottlewasher and physical impacts between the bottles during transportation on the conveyors. Based on an in-depth study made by our R&D Department in collaboration with the Belgian National Institute of Glass (INV), and a proven expertise, SOPURA proposes a **full approach to scuffing management** utilizing leading technologies.

*MIX BNA range*



# Hygiene Management in the Packaging Hall



## EXTERNAL CLEANING & SANITATION (FOAM & GEL)

Cleaning and sanitation of external surfaces is an important part of hygiene management in the packaging hall. The common method involves the use of foam or gel. This is because foam and gel adhere to a surface for longer than straight liquid, significantly increasing the cleaning and sanitation efficiency.

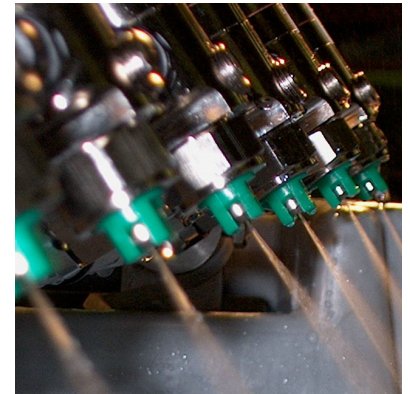
SOPURA proposes :

<b>ALCAFOAM</b>	<i>Range of foaming agents</i>
<b>ACIDOFOAM</b>	<i>Range of foaming agents</i>
<b>SOPURGEL</b>	<i>Gel solution particularly suitable for use with conveyors, fillers and crowners</i>

## LUBRICATION OF BELT CONVEYORS

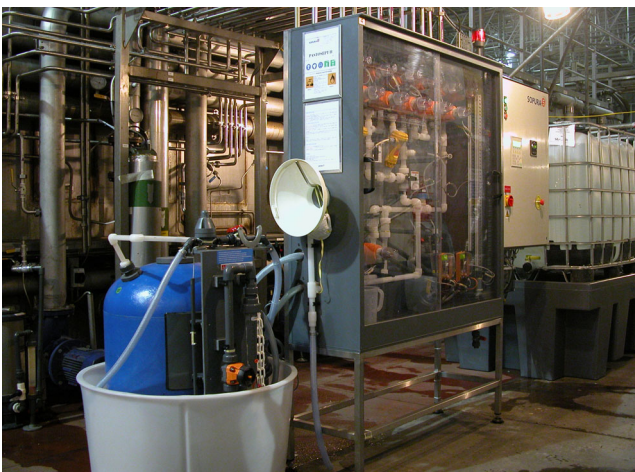
The key function of a lubricant is to minimize friction between the bottle/can and the conveyor chains. The lower the friction force, the less energy is used and the chain will last longer. Furthermore the lubricant must keep the chains clean while offering a suitable level of resistance to microbial growth (biostatic / biocidal capacity); it must be non-corrosive and prevent sedimentary deposits as well as spray nozzle blockage. SOPURA proposes a full range of lubricants that meet all these requirements:

<b>LUBRANOL</b>	<i>Classic soap-based lubricants</i>
<b>LUBRANOL S</b>	<i>Synthetic lubricants</i>
<b>LUBRANOL D</b>	<i>Dry lubricants, specially formulated for PET and Keg applications.</i> <i>Via a special spray nozzle, a perfect automated pulverization of the liquid on the plastic conveyor can be achieved.</i>



## PASTEURIZERS

To kill the micro-organisms present in bottled or canned beer, the brewer may use a tunnel pasteurizer. The extreme conditions in the machine (heat, water) can lead to three main risks: the development of algae and micro-organisms in the baths, the corrosion of bottle caps and mild steel cans and the formation of scale (mainly in the case of canned beer pasteurization).



Therefore SOPURA has formulated a range of highly efficient products dedicated to pasteurizer applications.

**Sanitation of Process Water** (*Inhibits formation of algae and growth of micro-organisms*)

**PASTOSEPT** *Range of liquid solutions*

**PASTOSEPT H** *Tablets*

**Prevention of Scale** (*through pH regulation*) and **Corrosion** of pasteurizer and caps

**PASTO AC / ACAL**

Should you require further information on our solutions for your Packaging Hall, please do not hesitate to contact us:

[www.sopura.com](http://www.sopura.com)  
[sales@sopura.com](mailto:sales@sopura.com)

